

- LEGEND**
- P.B.C. = PALM BEACH COUNTY
 - NO. = NUMBER
 - P.U.D. = PLANNED UNIT DEVELOPMENT
 - + = MORE OR LESS
 - A = ARC LENGTH
 - Δ = CENTRAL ANGLE
 - R = RADIUS
 - CL = CENTERLINE
 - D.U. = DWELLING UNIT
 - P.L.S. = PROFESSIONAL LAND SURVEYOR
 - P.R.M. = PERMANENT REFERENCE MONUMENT
 - P.O.B. = POINT OF BEGINNING
 - SEC = SECTION
 - O.R.B. = OFFICIAL RECORD BOOK
 - A.I.D. = ACME IMPROVEMENT DISTRICT

WINDING OAKS

OF PALM BEACH POLO AND COUNTRY CLUB

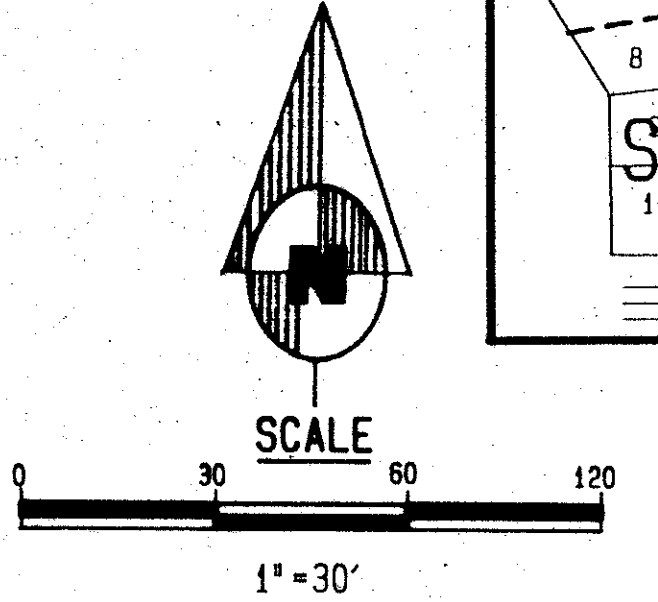
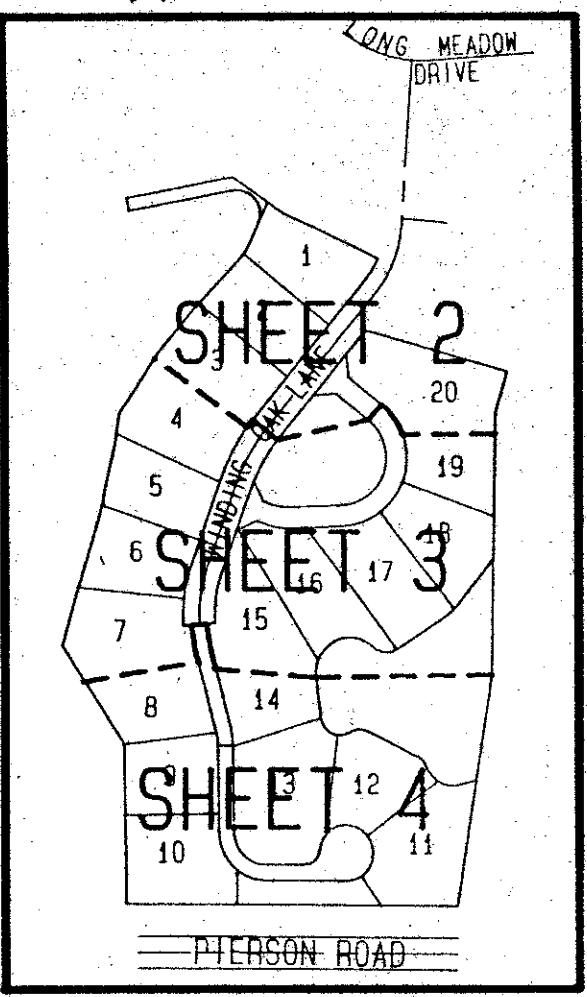
WELLINGTON - P. U. D.

BEING A REPLAT OF PARCELS C, D, E, F AND J OF OAK TREE VILLAS OF PALM BEACH POLO AND COUNTRY CLUB, WELLINGTON P. U. D. AS RECORDED IN PLAT BOOK 57, PAGES 112 AND 113 AND 113 OF THE PUBLIC RECORDS OF PALM BEACH COUNTY FLORIDA AND OTHER LANDS.

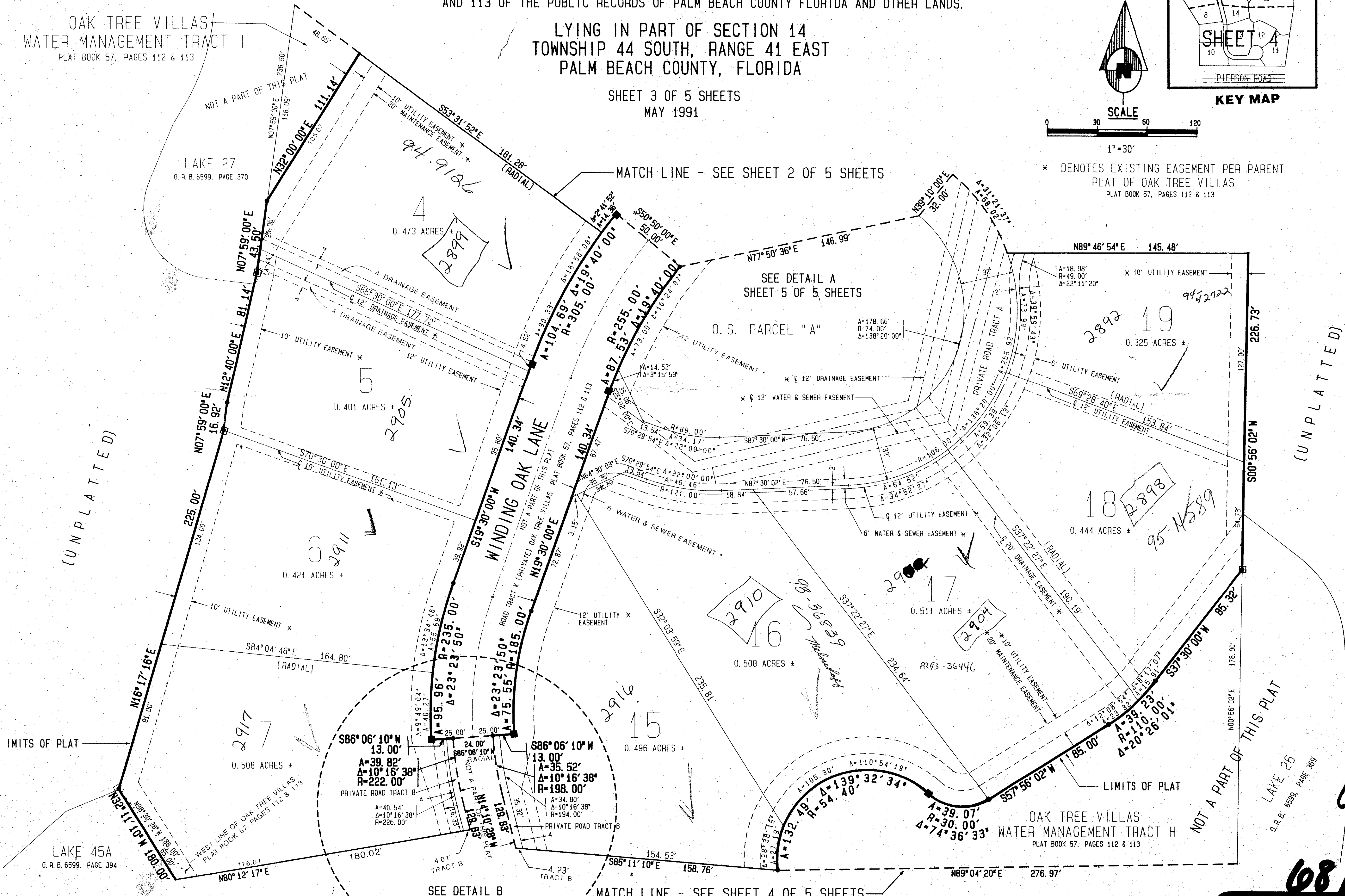
LYING IN PART OF SECTION 14
TOWNSHIP 44 SOUTH, RANGE 41 EAST
PALM BEACH COUNTY, FLORIDA

SHEET 3 OF 5 SHEETS
MAY 1991

OAK TREE VILLAS
WATER MANAGEMENT TRACT I
PLAT BOOK 57, PAGES 112 & 113



* DENOTES EXISTING EASEMENT PER PARENT PLAT OF OAK TREE VILLAS PLAT BOOK 57, PAGES 112 & 113



(UNPLATTED)

(UNPLATTED)

PET. 86-32 H
Collect

0332-098

08/147

WINDING OAKS

TAZ # 730

SUBDIVISION - Winding Oaks
 BOOK 58 PAGE 147
 FLOOD ZONE - AC-1 FLOOD MAP - ICCB
 QUAD - 62 ZONING - AR
 SE ZIP CODE 33414
 PID NAME - WELLINGTON

Dailey-Fotony, inc.
land surveyors, planners, engineers
5050 10th Avenue North, Suite B - Lake Worth, Florida 33463-2602
Phone 407-963-8787